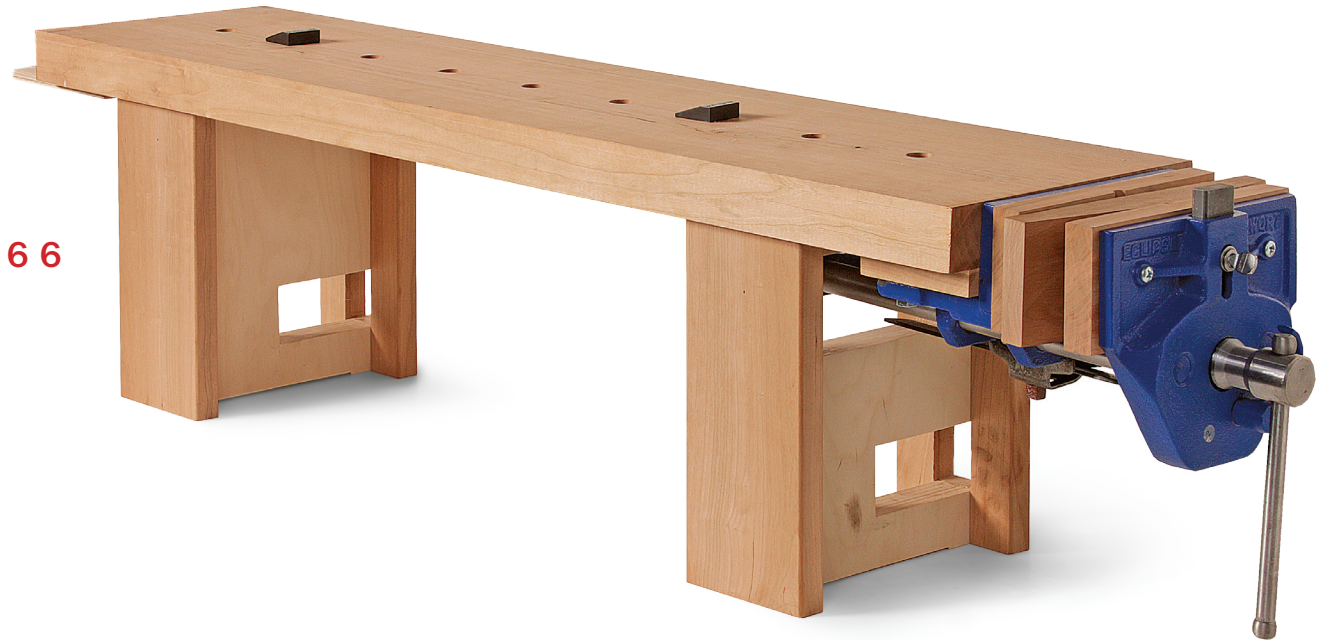


SKILL LEVEL:

- Beginner**
- Intermediate
- Advanced
- Expert

PROJECT PLAN #SU66

Miniature Bench



Included in the plans:

- Scale drawings
- Detailed cutlist
- SketchUp drawing

This mini bench by Steve Latta puts your work at a comfortable height for use with small power tools, hand tools, all kinds of joinery, and detail work. Clamped to the top of a regular workbench, it is the perfect length for most furniture parts. It has a vise on one end, and a row of dog holes for holding parts. There's plenty of clearance below for clamps. The top rests on two strong I-beam legs, mounted flush with one side of the top so that you can clamp work to the side of the bench. Each leg assembly is mortised on the flush side so that the bench can be clamped to your bench.

Size: 9-1/2 in. wide by 42 in. long by 11-7/8 in. tall



The Taunton Press
Inspiration for hands-on living®

63 South Main Street
Newtown, CT 06470
(203) 426-8171

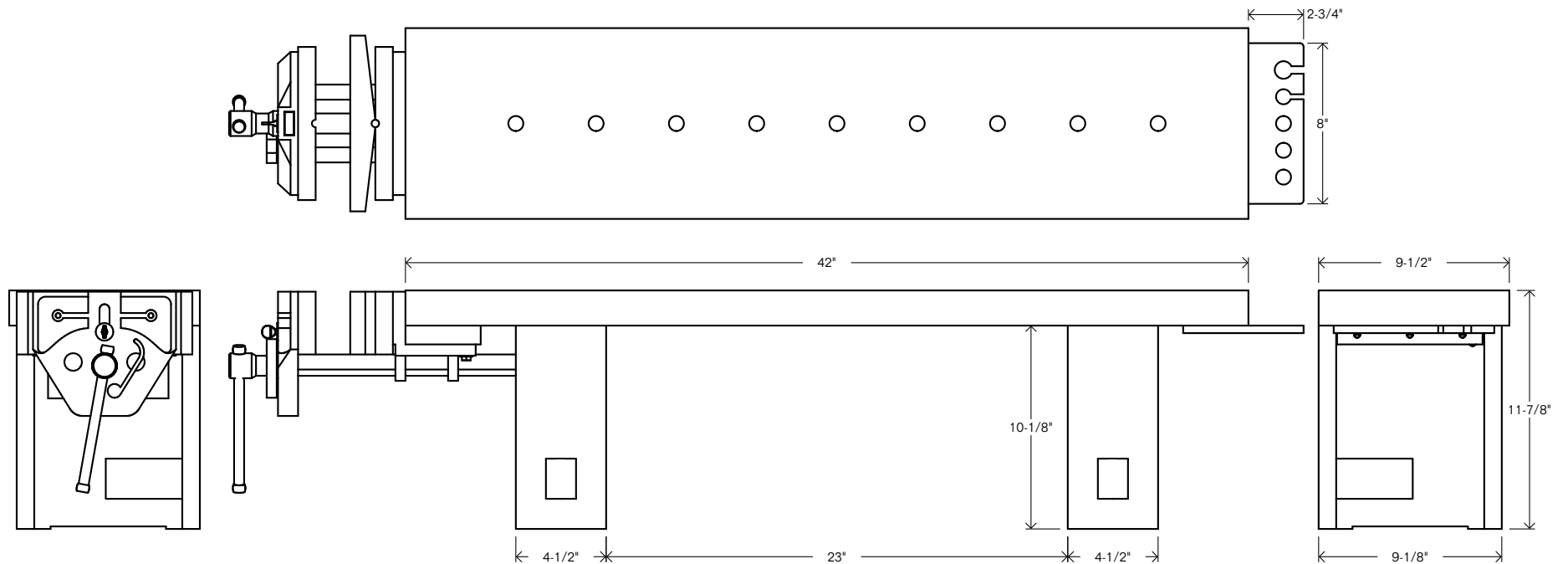
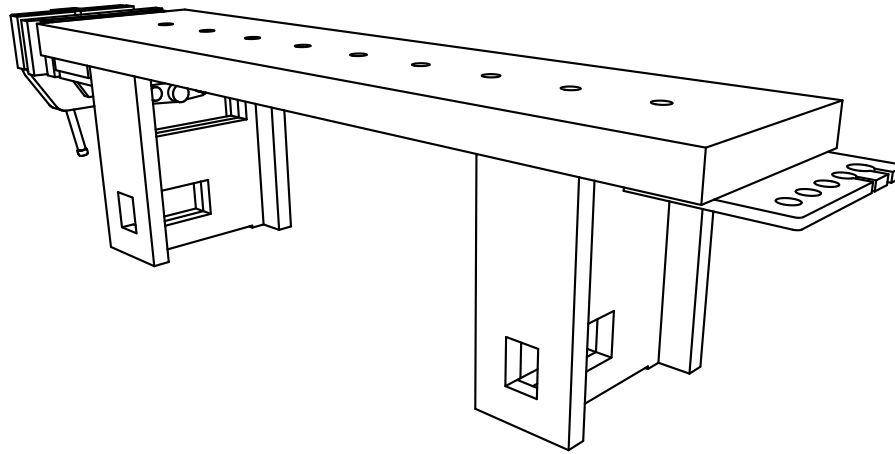
To purchase additional plans, visit www.finewoodworking.com/planstore

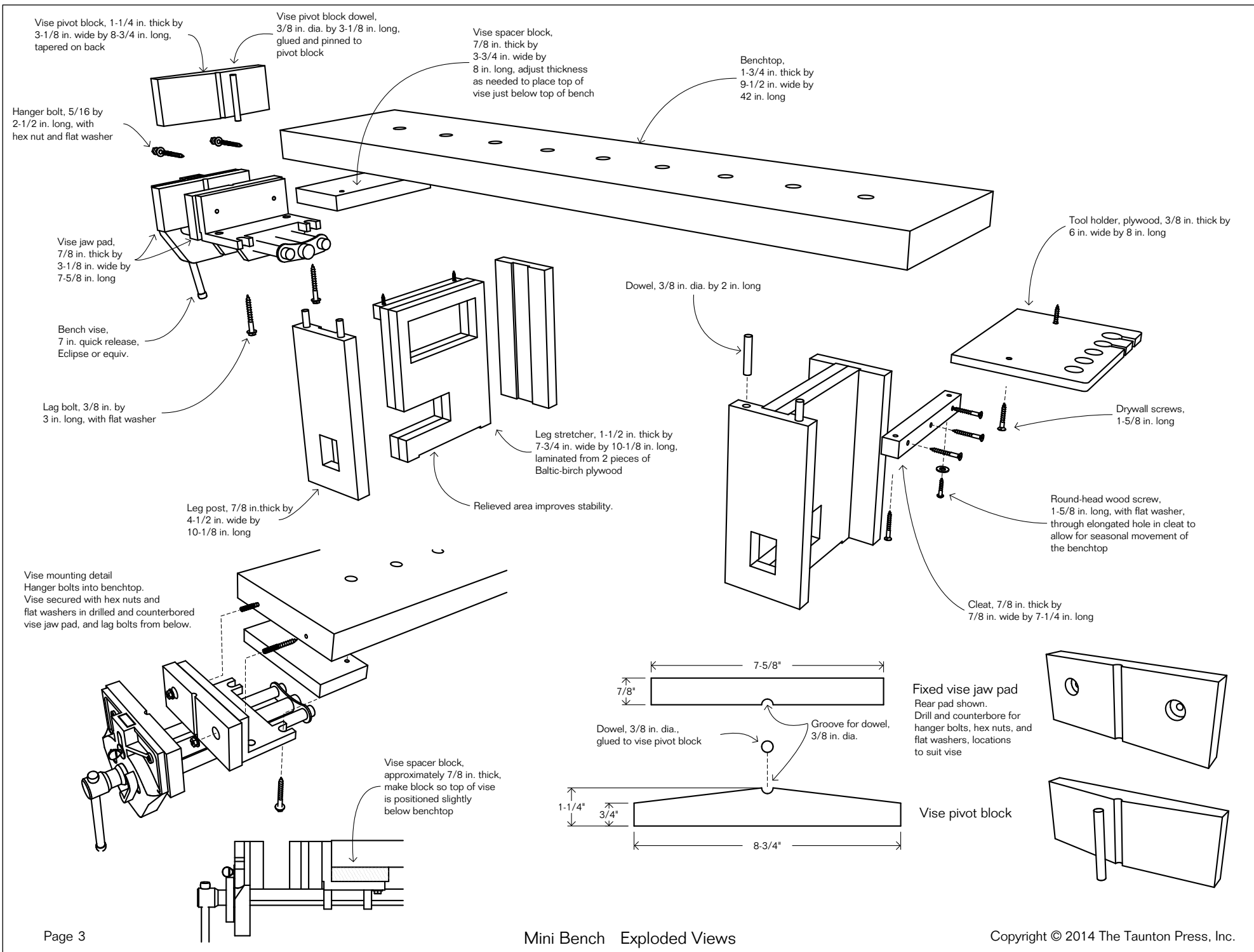
Taunton Product # 065175

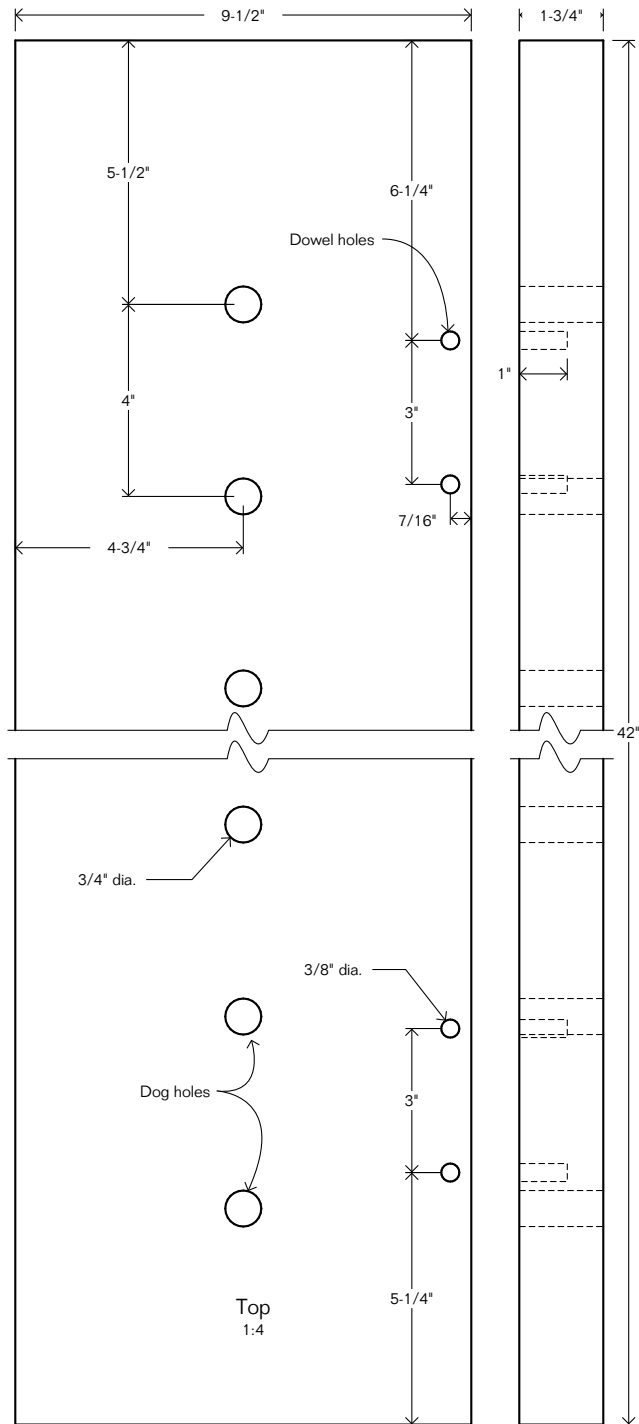
Fine Wood Working

Miniature Bench

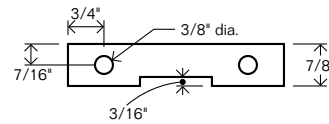
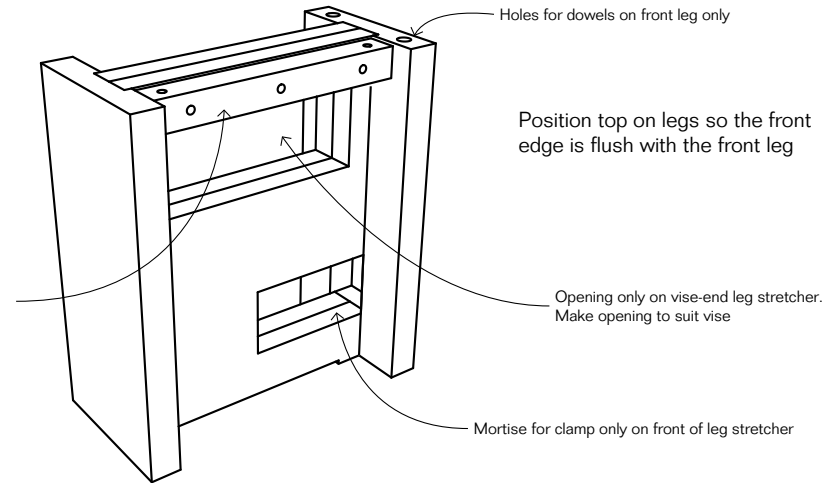
By Steve Latta
Drawings by David Richards



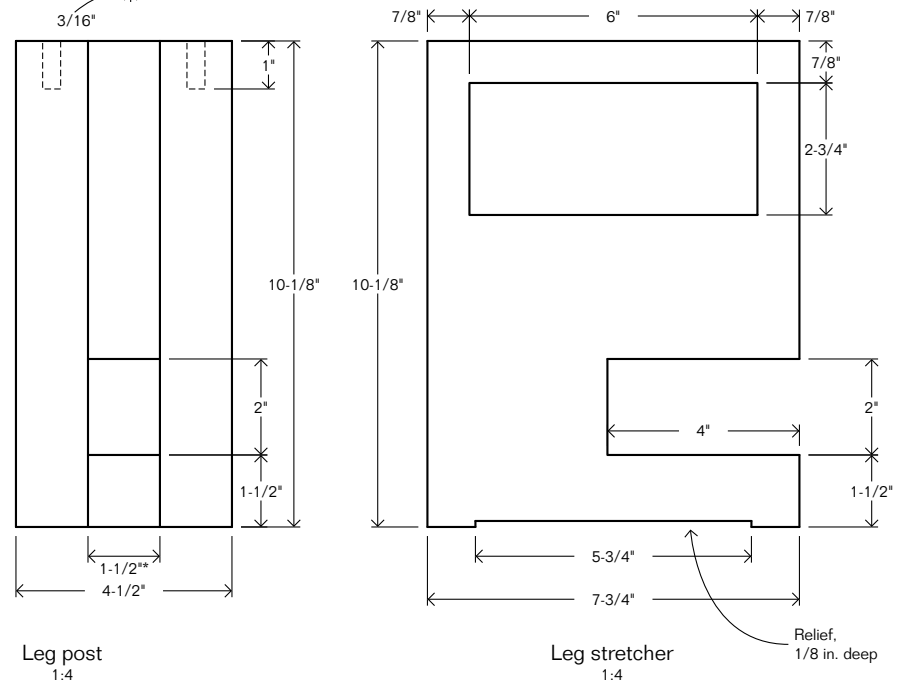




Cleat, 7/8 in. thick by 7/8 in. wide by 7-1/4 in. long, attached to leg stretcher slightly below top edge to allow the benchtop to be pulled down tightly. Elongate rear hole for screw into benchtop and use round-head wood screw with flat washer to secure benchtop.



Mortise for clamp access on front leg only



*Adjust width of groove to match thickness of leg stretcher after glue-up.

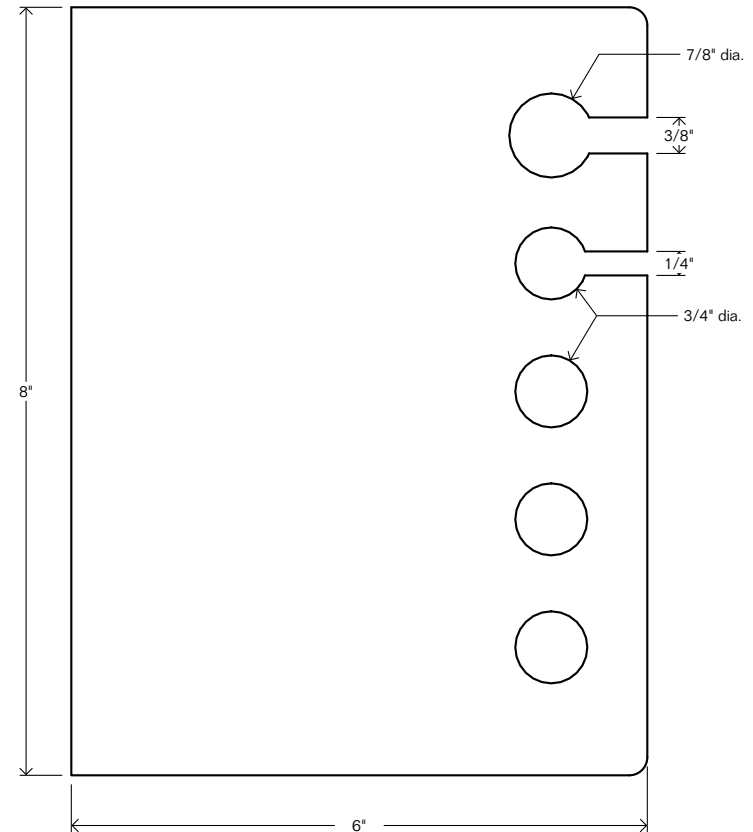
Materials List				
Qty	Description	Thickness	Width	Length
1	Cherry benchtop	1-3/4 in.	9-1/2 in.	42 in.
4	Cherry leg post	7/8 in.	4-1/2 in.	10-1/8 in.
2	Cleat	7/8 in.	7/8 in.	7-1/4 in.
1	Vise spacer block	7/8 in. †	3-3/4 in.	8 in.
2	Vise jaw pad	7/8 in.	3-1/8 in.	7-5/8 in.
2	Vise pivot block	1-1/4 in.	3-1/8 in.	8-3/4 in.
Total board feet		6.1*		

Plywood				
1	Tool holder	3/8 in.	6 in.	8 in.
4	Leg stretcher	3/4 in.	7-3/4 in.	10-1/8 in.

Other parts				
4	Dowel	3/8 in. dia. by 2 in. long		
10	Drywall screw	1-5/8 in. long		
2	Round-head wood screw	#8 by 1-5/8 in. long		
2	Flat washer	1/4 in.		
1	7 in. quick-release bench vise	Eclipse EWWQR7 or equiv.		
2	Lag bolt	3/8 in. by 3 in. long		
2	Flat washer	3/8 in.		
2	Hanger bolt	5/16 in. by 2-1/2 in. long		
2	Hex nut	5/16 in.		
2	Flat washer	5/16 in.		
2	Vise pivot dowel	3/8 in. dia. by 3-1/8 in. long		

†Adjust thickness as needed so top edge of vise is just below top of bench surface.

*This number represents the exact amount of material in this project. The actual amount of lumber required to build this piece will vary depending on the widths and lengths available at the lumberyard. For budgeting purposes, add 40-50%.



Tool holder,
3/8-in.-thick plywood,
holes and spacing to suit tools